

RATIOS

A NEGATIVE RATIO INDICATES THAT THE OUTPUT SHAFT ROTATES OPPOSITE THE INPUT SHAFT

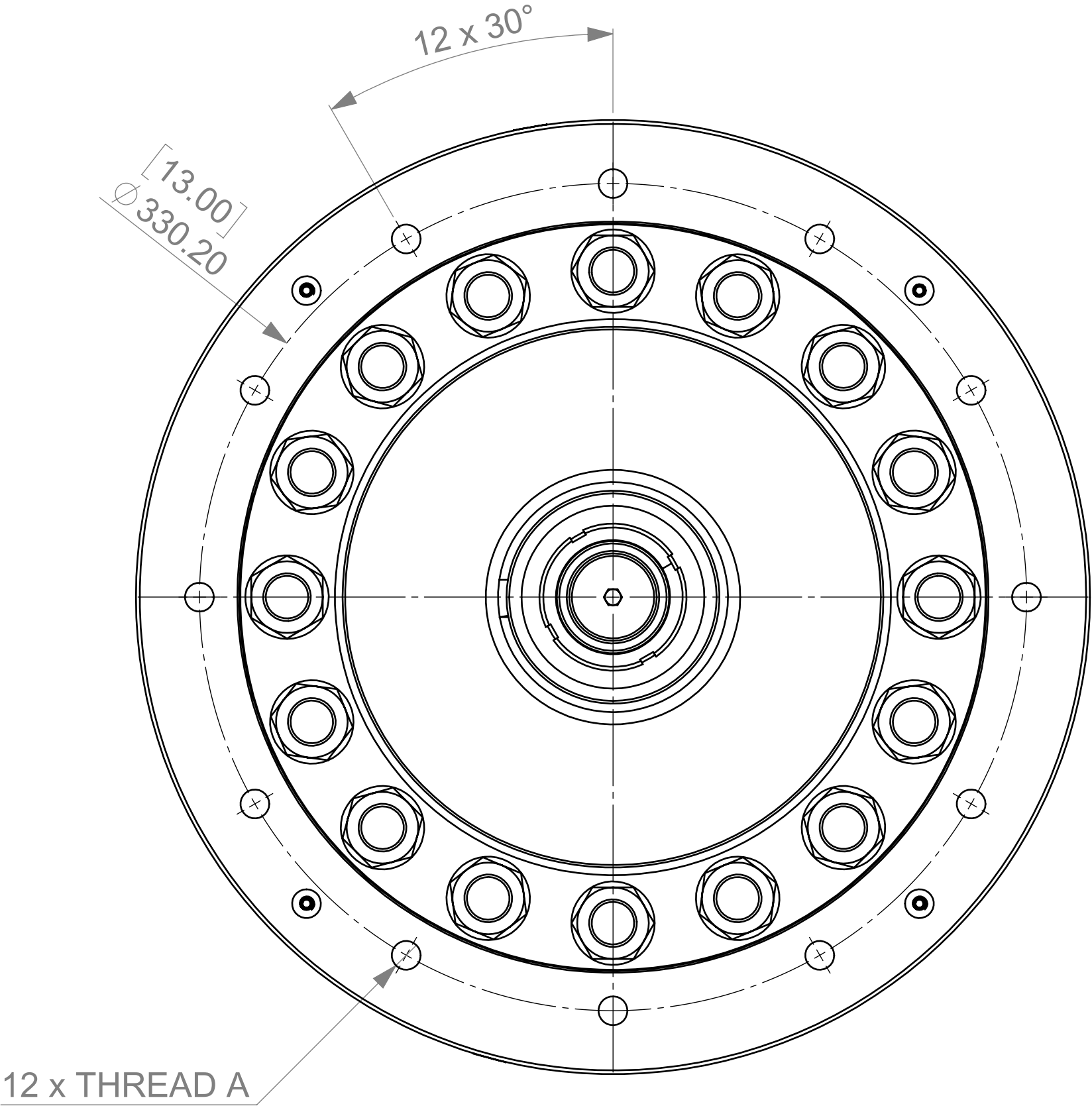
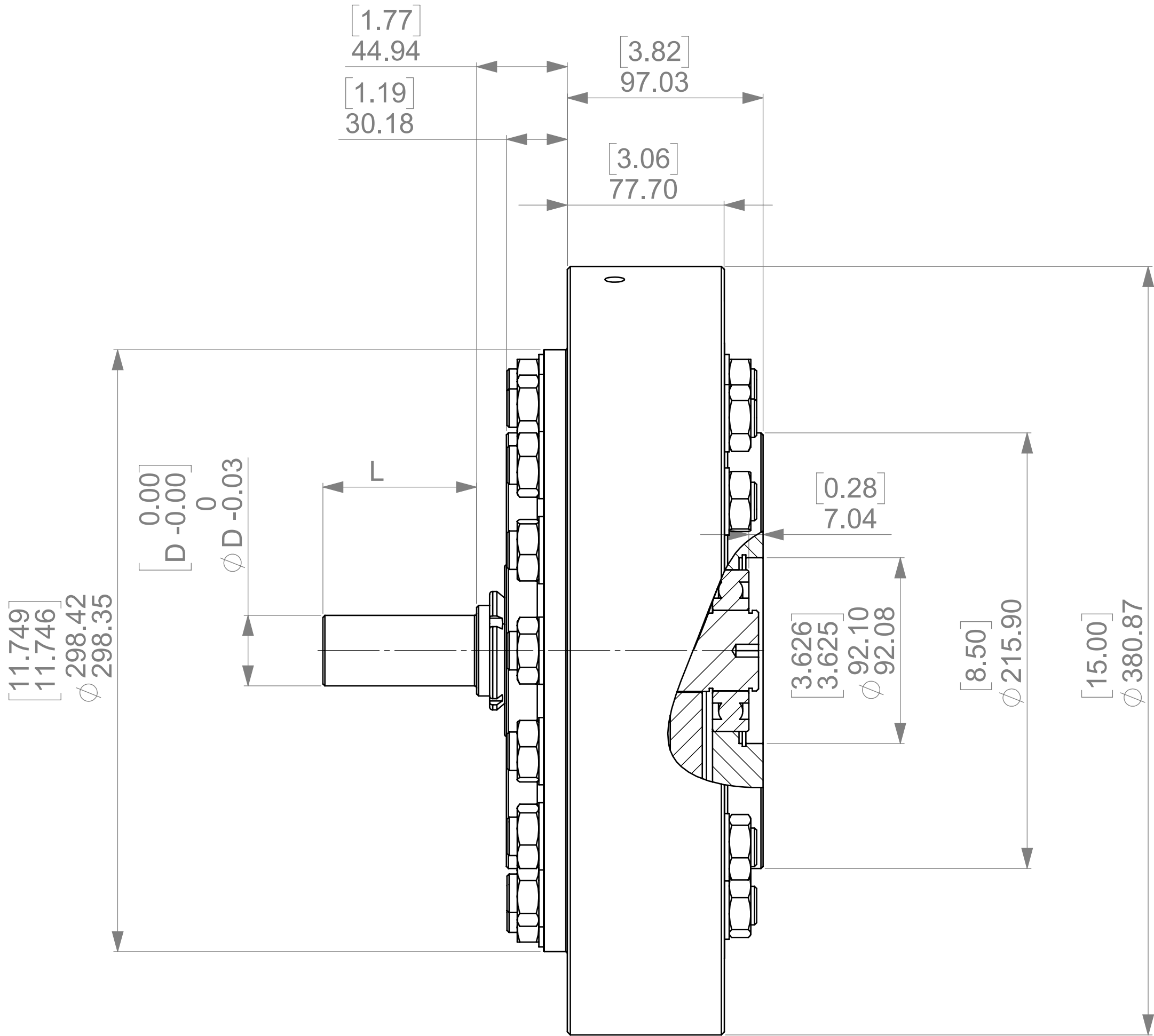
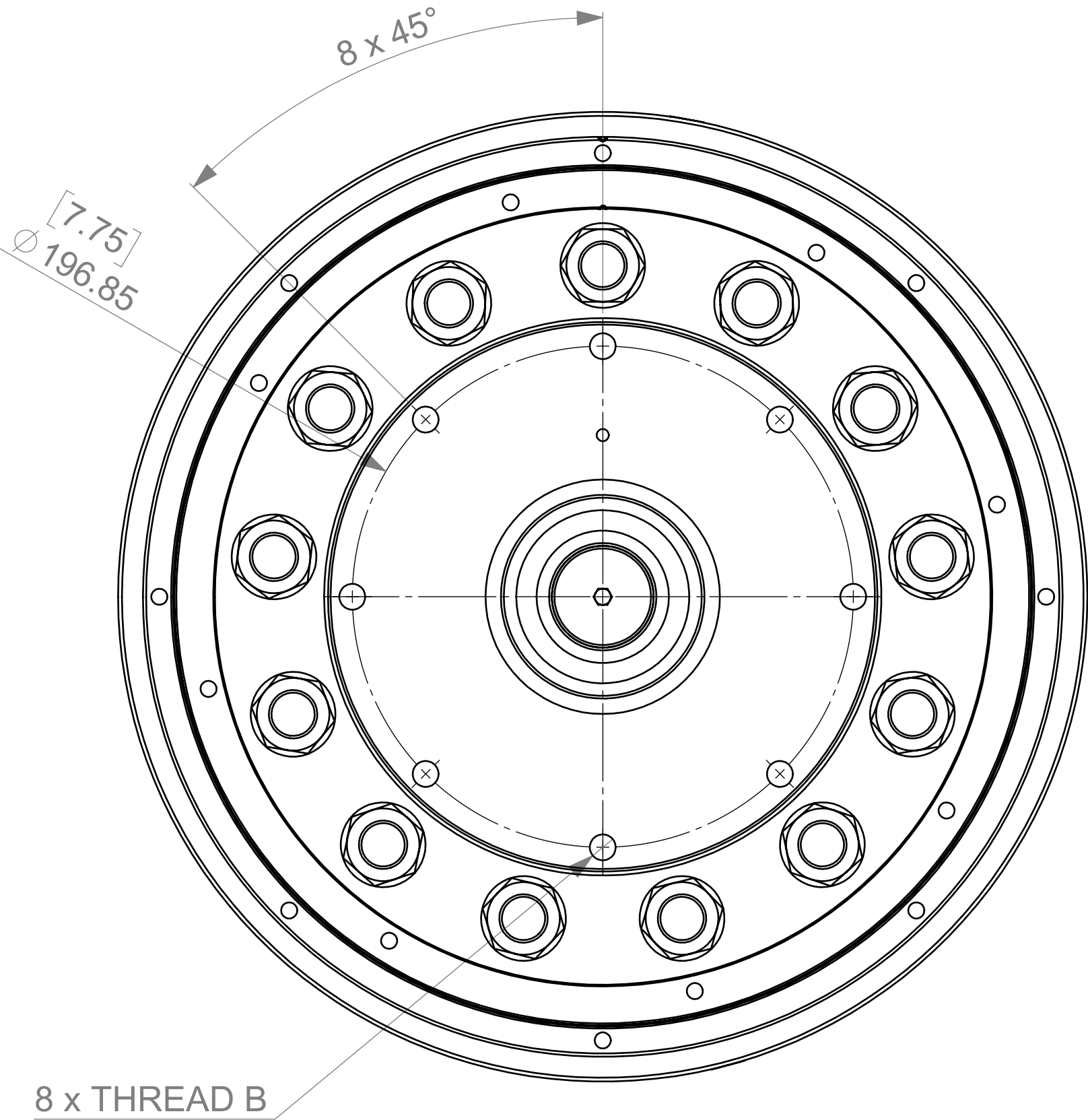
- +10
- +12
- +15
- +16
- 24
- +25
- 27
- +28
- +32
- +33
- 39
- +40
- 44
- 54
- 55
- 64
- +65
- 77
- +78
- 90
- +91
- +100
- 104
- +105
- 120
- +121
- 143
- +144
- 168
- +169
- 195
- +196
- 224
- +225

WEIGHT
70.9 Kg
156 Lb


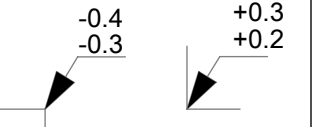
REVISIONS				
ZONE	REV.	DESCRIPTION	DATE	APPROVED
	A	INITIAL RELEASE	10/10/2019	BSL

NUMBER OF NUTS
DEPENDS ON RATIO

NUMBER OF NUTS
DEPENDS ON RATIO

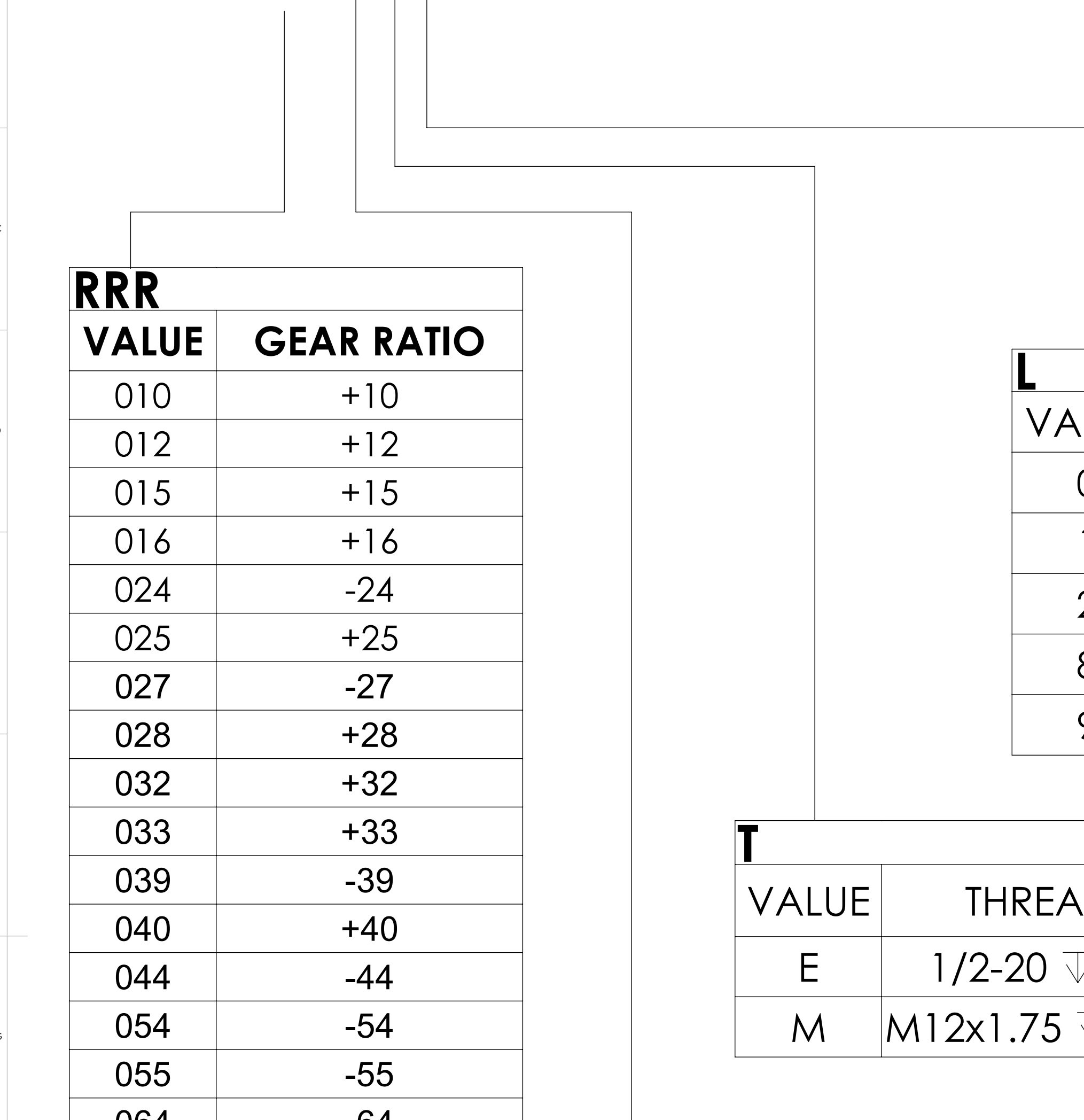


√ Ra 1.6 (✓)

DRAWN BY: BSL		DATE: 10OCT19	SCALE: 1:2		onvio	
CHECKED BY:		DATE:	UNSPECIFIED TOLERANCES PER ISO 2768 m K			
APPROVED BY:		DATE:	UNSPECIFIED EDGES PER ISO 13715		MATERIAL: FINISH:	
ALL DIMENSIONS IN MILLIMETRES			-0.4 -0.3		HEAT TREAT:	
					M10, i=XXX, Family Variations, Stub Shaft Input	
PAPER SIZE A1		DOCUMENT TYPE DET		LANGUAGE CODE EN		
SHEET NUMBER 1/2		PART NUMBER DM10RRRFTLS0000		REVISION A		

CONFIGURATION DESCRIPTION

DM10RRRFTLS0000



RRR	
VALUE	GEAR RATIO
010	+10
012	+12
015	+15
016	+16
024	-24
025	+25
027	-27
028	+28
032	+32
033	+33
039	-39
040	+40
044	-44
054	-54
055	-55
064	-64
065	+65
077	-77
078	+78
090	-90
91	+91
100	+100
104	-104
105	+105
120	-120
121	121
143	-143
144	144
168	-168
169	169
195	-195
196	196
224	-224
225	225

L	
VALUE	LUBRICATION
0	STANDARD
1	LOW TEMPERATURE
2	HIGHT TEMPERATURE
8	VACUUM
9	FOOD GRADE

T				
VALUE	THREAD A	THREAD B	DIAMETER D	LENGTH L
E	1/2-20 ∇ 0.93"	1/2-20 ∇ 1.0"	1.375in	3.0in
M	M12x1.75 ∇ 23mm	M12x1.75 ∇ 25mm	35mm	80mm

F	
VALUE	HOUSING FINISH
B	BLACK OXIDE
N	NICKEL

NOTE
STANDARD SHAFT DIMENSIONS SHOWN
OTHER SHAFT DIAMETERS AND LENGHTS AVAILBLE
MAXIMUM DIAMETER "D" 42mm [1.65in]
MAXIMUM LENGHT "L" 173mm [6.8in]
CONTACT ONVIO FOR MORE INFORMATION

